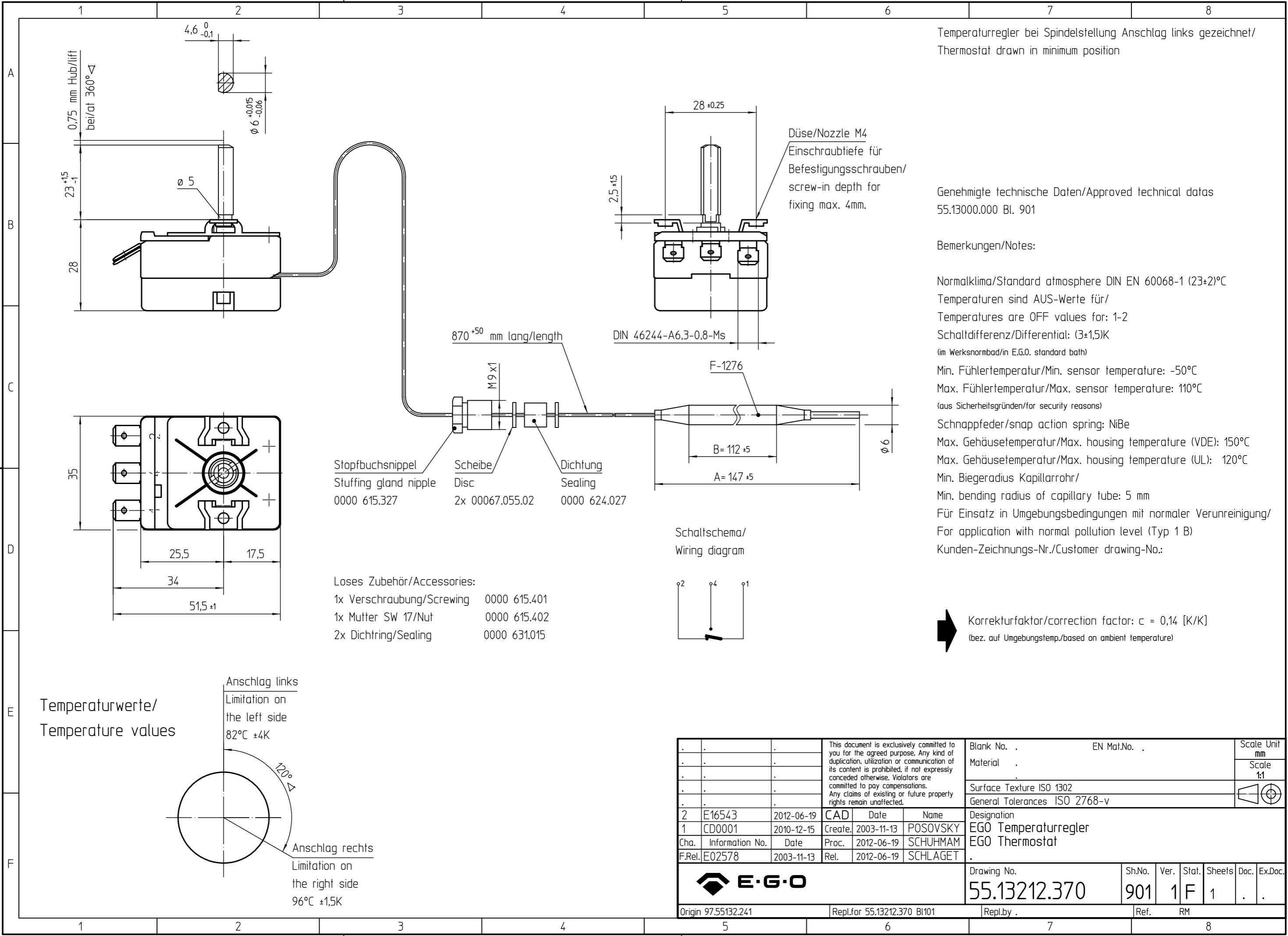


document id.: 55.13212.370-901-01-A / state: 230 - released
 view date: 2022-12-20 18:17:05 / user: ANGELES M
 item id.: 55.13212.370-00/69A / SAP material state: 2F



Temperaturregler bei Spindelstellung Anschlag links gezeichnet/
 Thermostat drawn in minimum position

Genehmigte technische Daten/Approved technical datas
 55.13000.000 Bl. 901

Bemerkungen/Notes:

Normalklima/Standard atmosphere DIN EN 60068-1 (23±2)°C
 Temperaturen sind AUS-Werte für/
 Temperatures are OFF values for: 1-2
 Schaltdifferenz/Differential: (3±1,5)K
 (im Werksnormbad/in E.G.O. standard bath)

Min. Fühlertemperatur/Min. sensor temperature: -50°C
 Max. Fühlertemperatur/Max. sensor temperature: 110°C
 (aus Sicherheitsgründen/for security reasons)

Schnappfeder/snap action spring: NiBe
 Max. Gehäusetemperatur/Max. housing temperature (VDE): 150°C
 Max. Gehäusetemperatur/Max. housing temperature (UL): 120°C

Min. Biegeradius Kapillarrohr/
 Min. bending radius of capillary tube: 5 mm
 Für Einsatz in Umgebungsbedingungen mit normaler Verunreinigung/
 For application with normal pollution level (Typ 1 B)
 Kunden-Zeichnungs-Nr./Customer drawing-No.:

➔ Korrekturfaktor/correction factor: c = 0,14 [K/K]
 (bez. auf Umgebungstemp./based on ambient temperature)

This document is exclusively committed to you for the agreed purpose. Any kind of duplication, utilization or communication of its content is prohibited, if not expressly conceded otherwise. Violators are committed to pay compensations. Any claims of existing or future property rights remain unaffected.					Blank No. .	EN Mat.No. .	Scale Unit mm				
					Material .		Scale 1:1				
					Surface Texture ISO 1302						
					General Tolerances ISO 2768-v						
2	E16543	2012-06-19	CAD	Date	Name	Designation					
1	CD0001	2010-12-15	Create.	2003-11-13	POSOVSKY	EGO Temperaturregler					
Cha.	Information No.	Date	Proc.	2012-06-19	SCHUH MAM	EGO Thermostat					
F.Rel.	E02578	2003-11-13	Rel.	2012-06-19	SCHLAGET						
					Drawing No.	Sh.No.	Ver.	Stat.	Sheets	Doc.	Ex.Doc.
					55.13212.370	901	1	F	1	.	.
Origin 97.55132.241					Repl.for 55.13212.370 Bl101	Repl.by .	Ref.	RM			