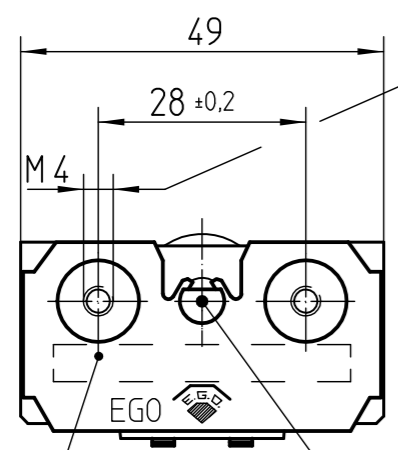


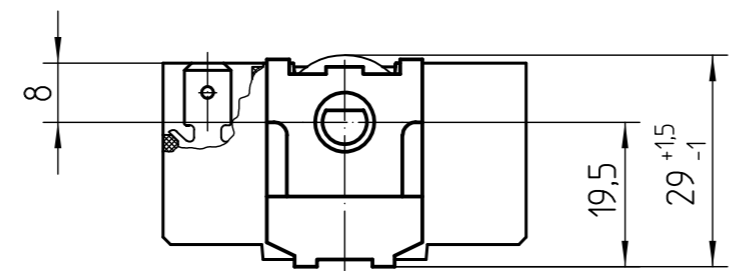
document id.: 42.08000.025-901-02-A / state: 230 - released
 view date: 2022-12-20 18:02:36 / user: ANGELES
 item id.: 42.08000.025-00/69A / SAP material state: 2F

Frontansicht
 front view
 Pogled sprijeda



Einschraubtiefe max. 6mm
 screw-in-depth max. 6mm
 dubina uvrtnja max. 6mm

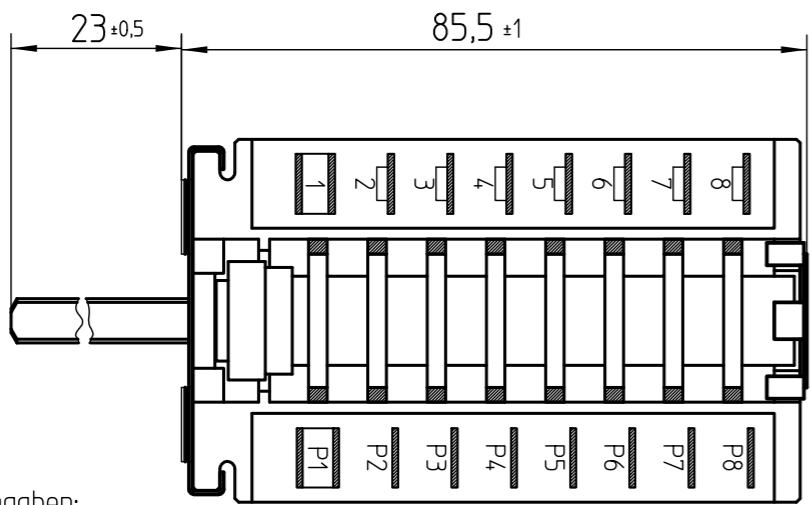
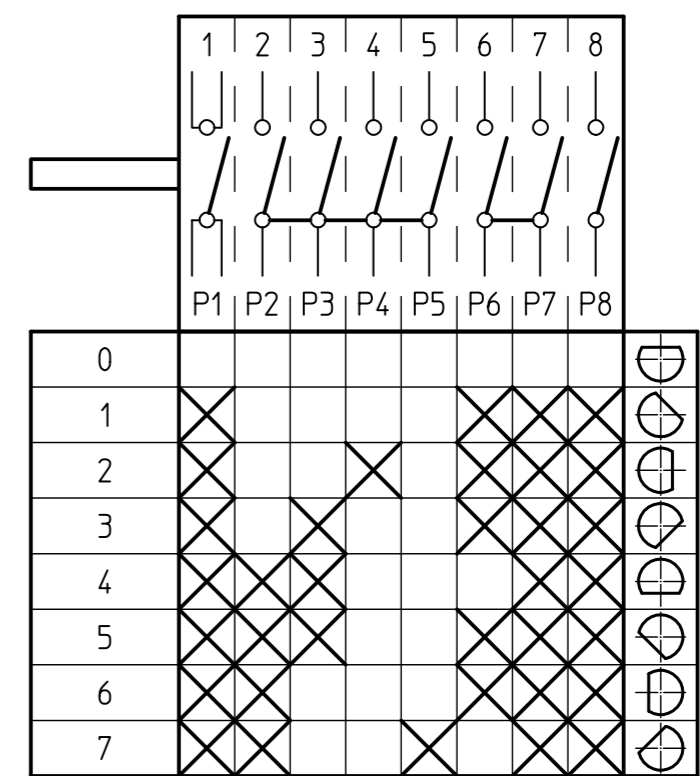
Rueckansicht
 rear view
 Pogled straga



Zeichengenehmigung
 approvals
 Oznake i odorenja

Achse in AUS-Stellung (0°)
 axle in OFF-position (0°)
 Osovina u položaju isključeno (0°)

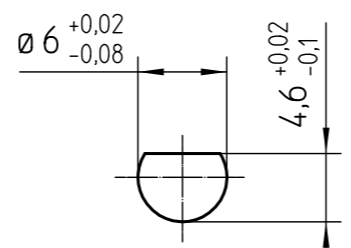
Schaltdiagramm
 switching diagram
 Schema spoja



Technische Angaben:
 - Flachstecker DIN 46244 A 6,3-0,8
 - Rasteranschluß: 8mm
 - Abweichung der Achsfläche in AUS-Stellung max. ±3°
 - Genehmigte technische Daten siehe Zeichnungsnummer 42.00000.001

technical data:
 - plug DIN 46244 A 6,3-0,8
 - connection: rast 8mm
 - divergence of axle area in OFF-position max. ±3°
 - approved technical data see type drawing 42.00000.001

Tehnicki podaci:
 - Plosnati priključak DIN 46244 A 6,3-0,8
 - Raster priključaka : 8 mm
 - Odstupanje ravnine osovine u položaju isključeno max. ±3°
 - Odobreni tehnicki podaci vidi crtez 42.00000.001



Achsprofil
 axle profile
 Profil osovine

This document is exclusively committed to you for the agreed purpose. Any kind of duplication, utilization or communication of its content is prohibited, if not expressly conceded otherwise. Violators are committed to pay compensations. Any claims of existing or future property rights remain unaffected.				Blank No. .	EN Mat.No. .	Scale Unit mm				
				Material .		Scale 1:1				
				Surface Texture ISO 1302						
				General Tolerances ISO 2768-c						
3	CD0001	2010-12-15		Designation		EGO Programmschalter EGO multi function switch EGO Okretna sklopka programska				
2	F03129	2010-09-24	CAD	Date	Name					
1	F02915	2010-02-20	Create.	2002-03-12	ERNSTC					
Cha.	Information No.	Date	Proc.	2010-09-24	ERNSTC					
F.Rel.	1554ER	2002-03-12	Rel.	2010-09-24	BELZB					
				Drawing No.	Sh.No.	Ver.	Stat.	Sheets	Doc.	Ex.Doc.
Origin 97.42080.410				42.08000.025	901	2	F	.	.	.
Repl.for .				Repl.by .	Reference S5532					