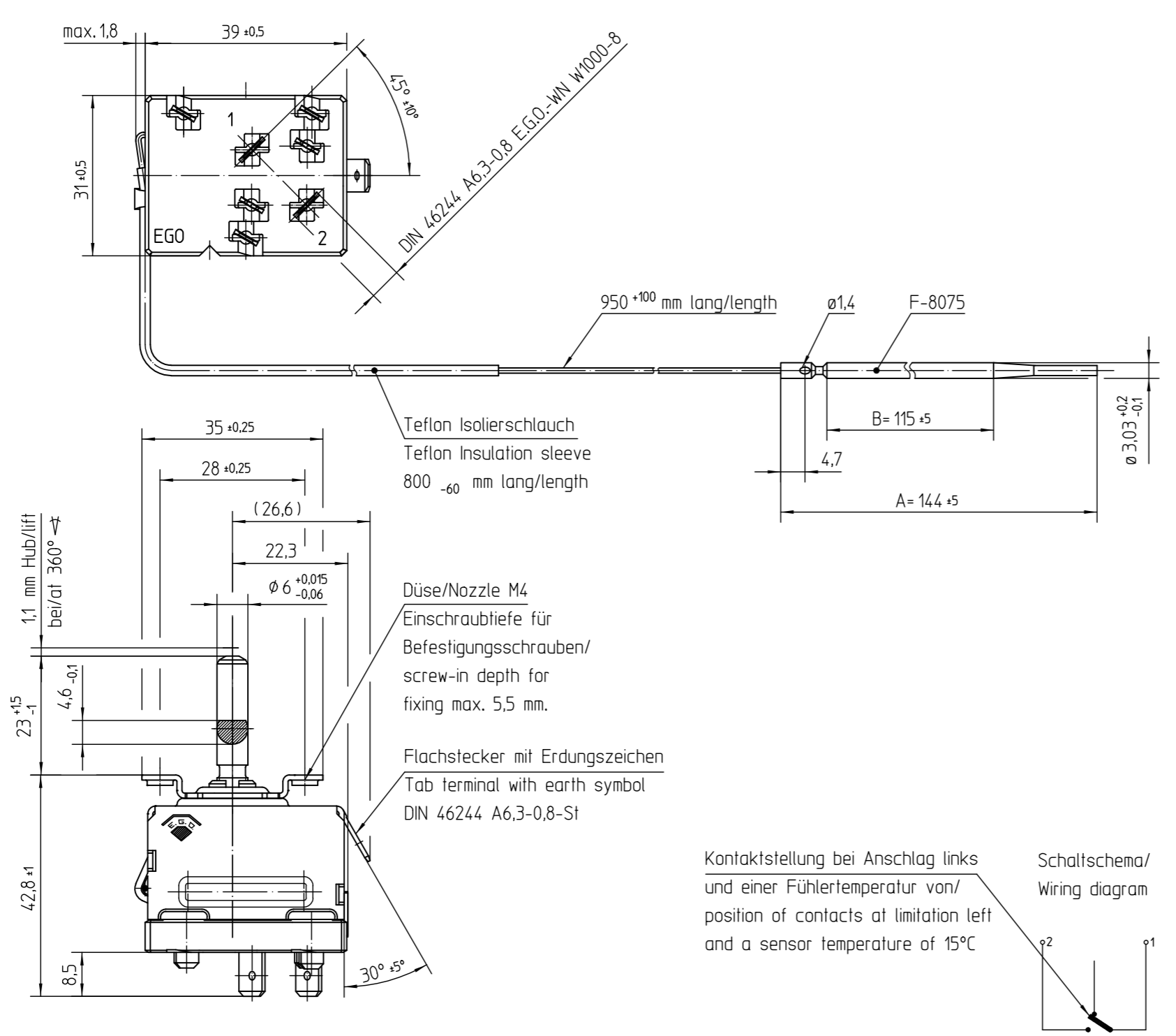


document id.: 55.17059.180-901-00-A / state: 230 - released
 view date: 2022-12-20 18:11:26 / user: ANGELESM
 item id.: 55.17059.180-00/69A / SAP material state: 2F



Temperaturregler bei Spindelstellung Anschlag links gezeichnet.
 Thermostat drawn in minimum position

Ohne Nullrast/Without zero-marking

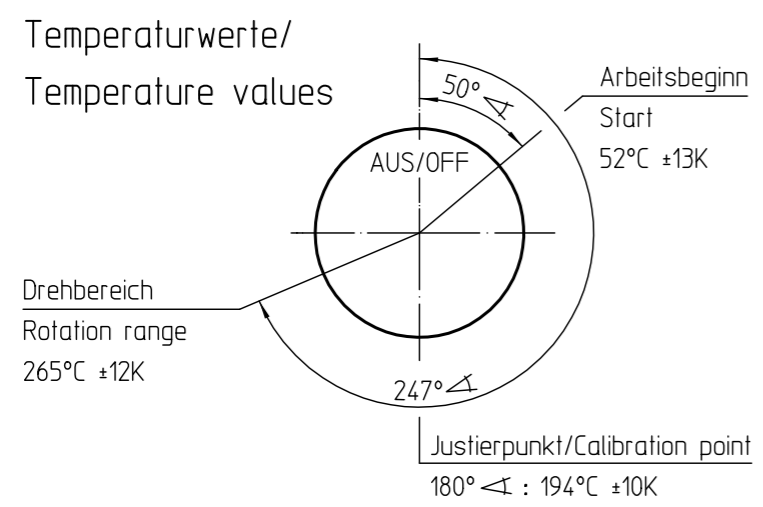
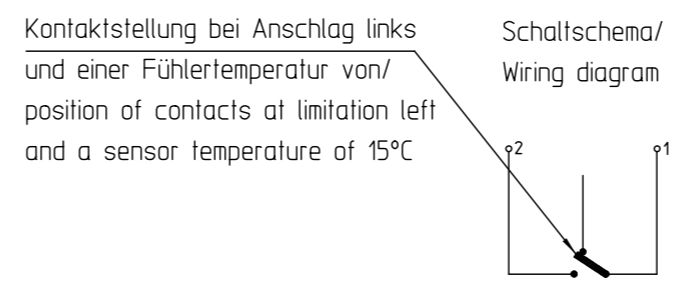
Genehmigte technische Daten/Approved technical data
 55.17000.000, Bl. 901

- Bemerkungen/Notes:
- Normalklima/Standard atmosphere DIN EN 60068-1 (23±2)°C
 - Temperaturen sind AUS-Werte/Temperatures are OFF values
 - Schaltdifferenz/Differential: (7±3,5)K
 (im Werksnormbad/in E.G.O. standard bath)
 - Min. Fühlertemperatur/Min. sensor temperature: -10°C
 - Max. Fühlertemperatur/Max. sensor temperature: 330°C
 (aus Sicherheitsgründen/for security reasons)
 - Schnappfeder/snap action spring: CuBe
 - Max. Gehäusetemperatur/Max. housing temperature (VDE): 125°C
 - Max. Gehäusetemperatur/Max. housing temperature (UL): 125°C
 - Min. Biegeradius Kapillarrohr/
 - Min. bending radius of capillary tube: 5 mm
 - Für Einsatz in Umgebungsbedingungen mit normaler Verunreinigung/
 For application with normal pollution level (Typ 1 B)
 - Kunden-Zeichnungs-Nr./Customer drawing-No.:

- Aufsteckkraft für Steckverbinder/
 Insertion force for receptacles max. 80N
- Abzugskraft für Steckverbinder/
 Extraction force for receptacles max. 70N

Korrekturfaktor/correction factor: c = 0,55 [K/K]
 (bez. auf Umgebungstemp./based on ambient temperature)

- Min. Temperaturänderungsgeschwindigkeit/
 Min. temperature change coefficient: 1K/min



This document is exclusively committed to you for the agreed purpose. Any kind of duplication, utilization or communication of its content is prohibited, if not expressly conceded otherwise. Violators are committed to pay compensations. Any claims of existing or future property rights remain unaffected.				Blank No. .	EN Mat.No. .	Scale Unit .
				Material .		Scale 1:1
				Surface Texture ISO 1302		
				General Tolerances ISO 2768-v		
		CAD	Date	Name	Designation	
1	CD0001	2010-12-15	Create.	2005-12-12	POSOVSKY	EGO Temperaturregler
Cha.	Information No.	Date	Proc.	2005-12-12	POSOVSKY	EGO Thermostat
F.Rel.	E05990	2005-12-12	Rel.	2005-12-12	SCHUPPLL	
				Drawing No.	Sh.No.	Ver.
				55.17059.180	901	0 F
Origin 97.55170.322				Repl.for .	Repl.by .	Reference RM
				Shets	Doc.	Ex.Doc.
				1	.	.